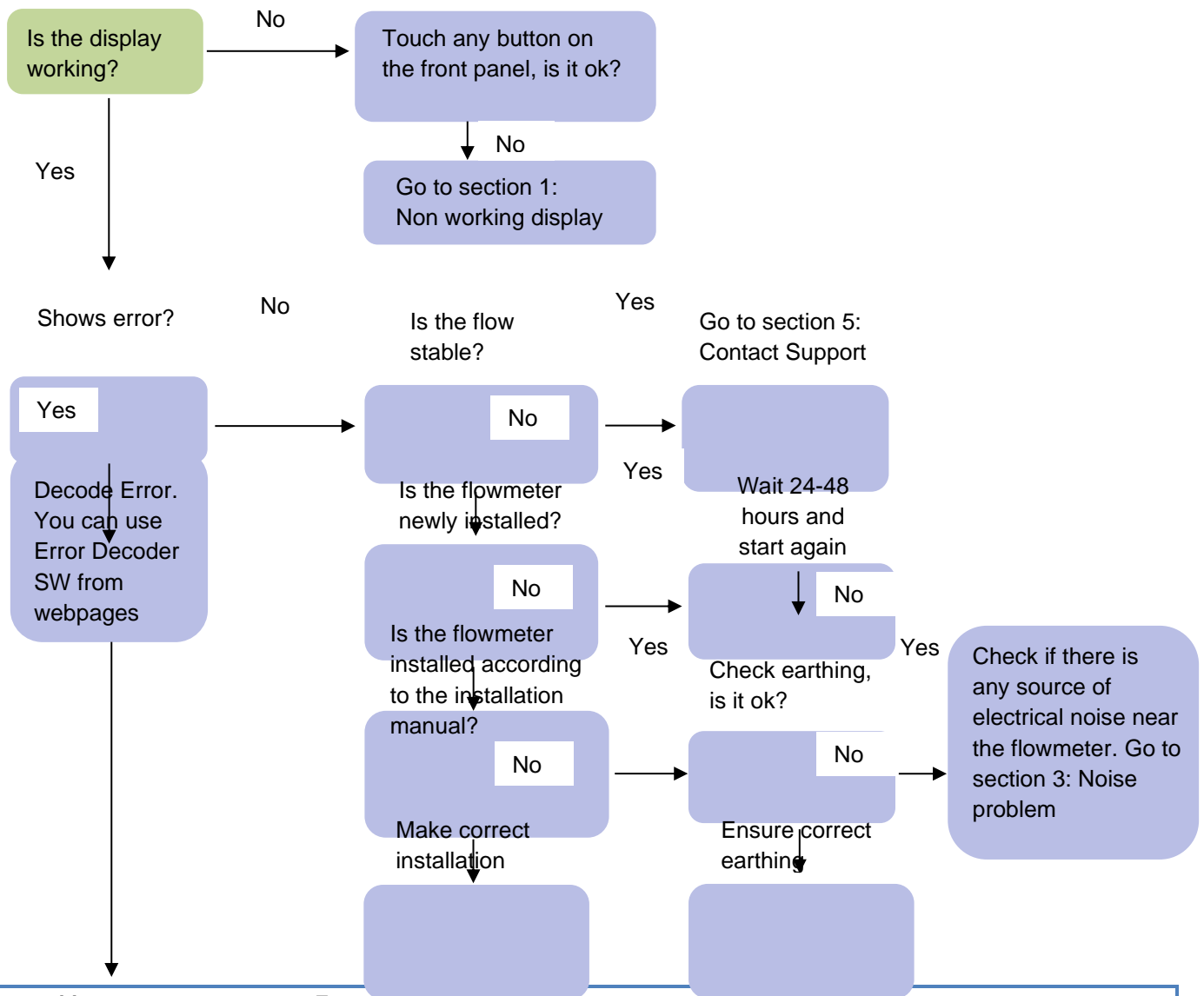


MAGB2

Troubleshooting and Sensor Test

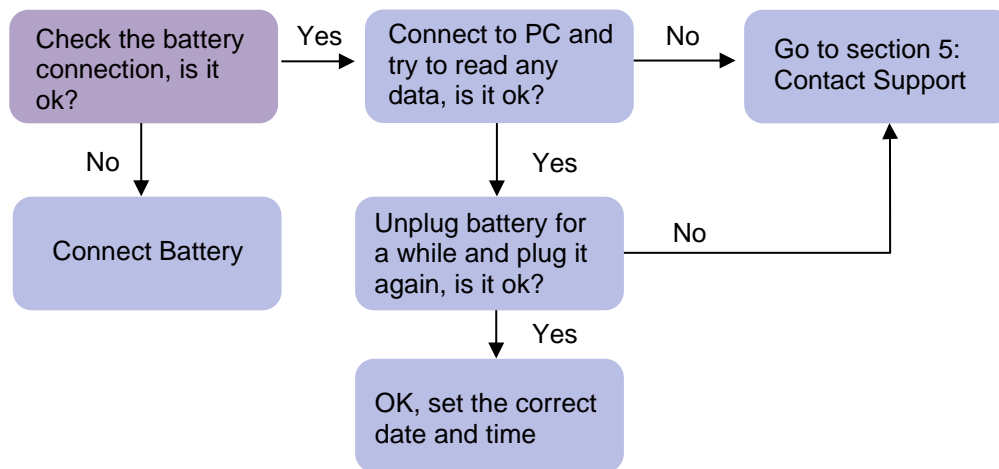


Arkon Flow Systems
Nováčkova 11, 614 00 Brno, Czech Republic
Tel. +420 543 214 822, Tel./Fax +420 543 215 249
Enquiries/ Orders/ General questions: arkon@arkon.co.uk
Marketing support/ Brochures: marketing@arkon.co.uk
Technical support: support@arkon.co.uk
www.arkon.co.uk

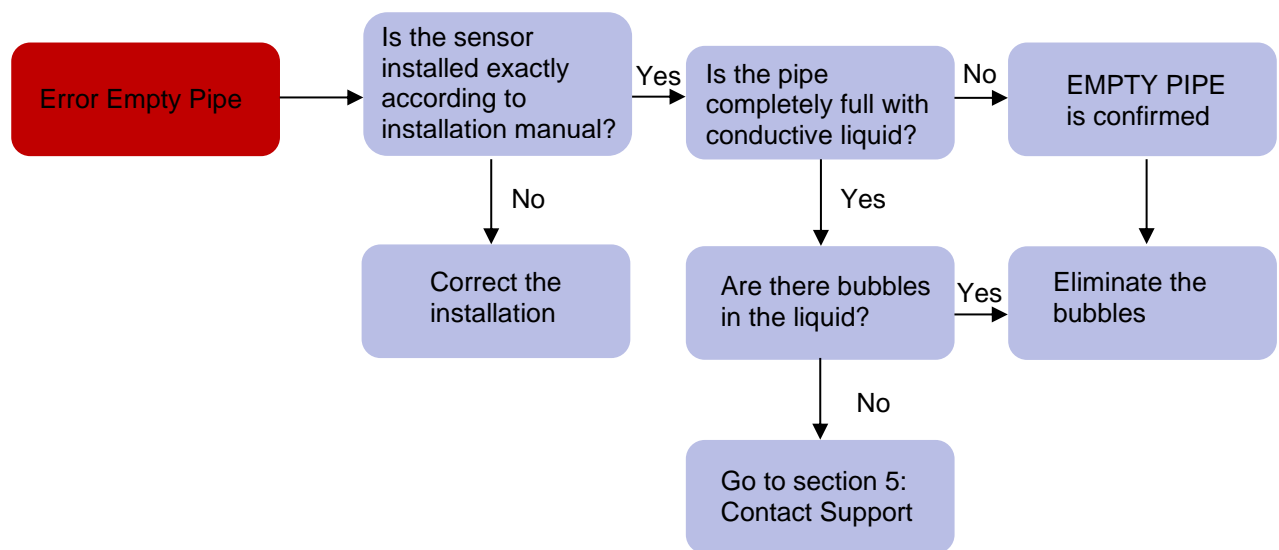


| Error position | Error Description | Solution |
|----------------|----------------------------|--|
| 0 | Empty Pipe (Air Detect) | Go to section 2: Empty pipe |
| 1 | Excitation | Go to section 4: Excitation |
| 2 | Low battery | Install new battery and reset battery capacity in service settings |
| 3 | GPRS | Go to section 5: Contact support |
| 4 | FOUT overloaded | Correct frequency output settings |
| 5 | Relay overloaded | Correct relay output settings |
| 6 | Relay comparator | Standard function |
| 7 | Temperature sensor fault | Go to section 5: Contact support |
| 8 | AD converter error | Go to section 5: Contact support |
| 9 | Pressure alarm | Standard function |
| 10 | FW Checksum fail | FW modified, contact support |
| 11 | External temperature alarm | Standard function |
| 12 | External pressure alarm | Standard function |
| 13 | Memory log error | Go to section 5: Contact support |
| 14 | Leak detected | Standard function |

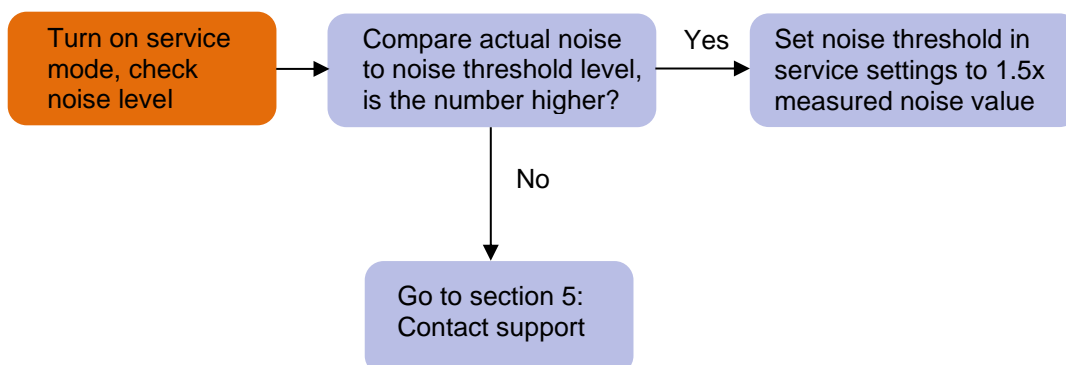
Section 1: Non working display



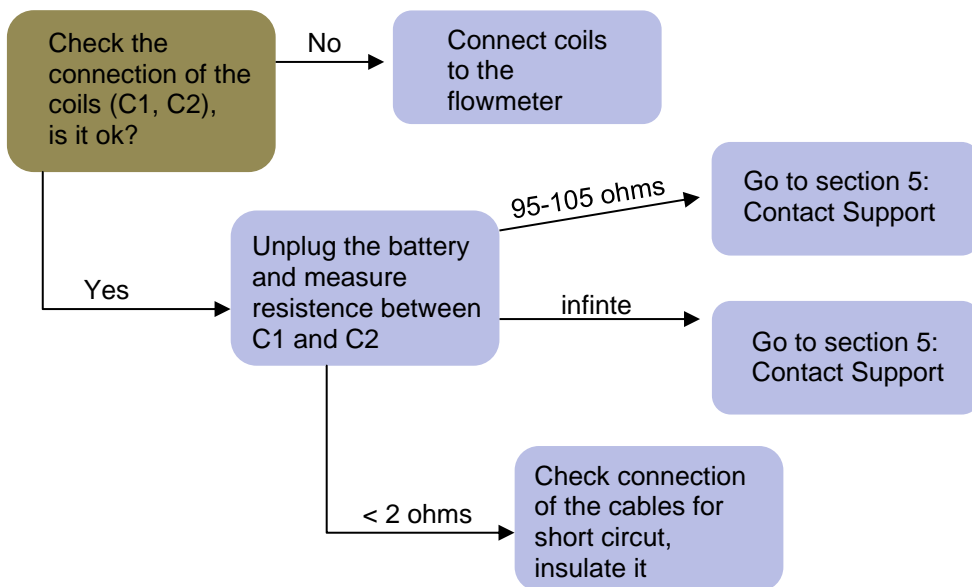
Section 2: Empty pipe



Section 3: Noise problem



Section 4: Error excitation



| Test No: | Check resistance: | Expected Value: | Probable cause if different value: |
|----------|--|---|--|
| 1 | (E1 x GND) | 1k Ω to 1M Ω With full sensor tube | Lower value: Short-circuit on the electrode |
| | (E2 x GND) | >1M Ω | Higher value: If the value with a full sensor tube is higher, the electrode is not connected |
| | (E1 x E2) | With an empty sensor tube | |
| 2 | C1 x C2 (EXCITATION) | 95 to 105 Ω | Lower value: Short-circuit on the excitation coils Higher value: Disconnected or interrupted excitation |
| 3 | C1 X GND of electrodes C2 x GND of electrodes | >10M Ω | Lower value: Coils not insulated from the sensor body |
| 4 | GND from electrodes x earthing screw | < 2 Ω | GND from electrodes x earthing screw |

All measurment must be done within the device disconnected from battery and sensor disconnected from motherboard!

Section 5: Contact for Technical Support

Information required:

Serial number of the flowmeter, FW version, SW version, Fault description, Photos of installation (if applicable)

Technical support: support@arkon.co.uk

Skype: [support.arkon](https://www.skype.com/en/contacts/arkon)

Phone: +420 543 214 822

